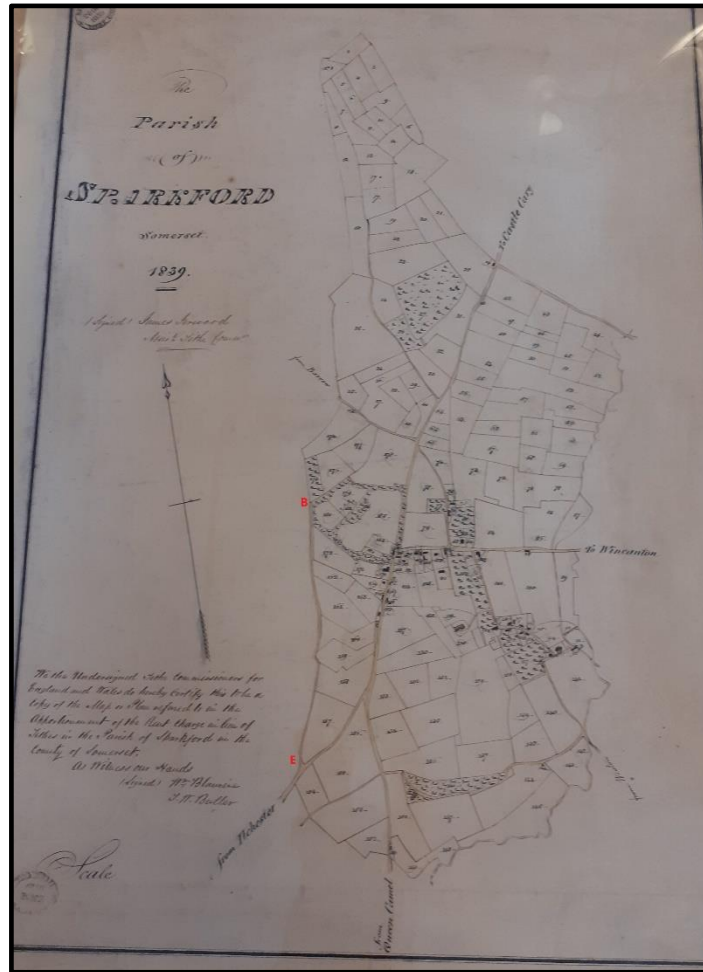


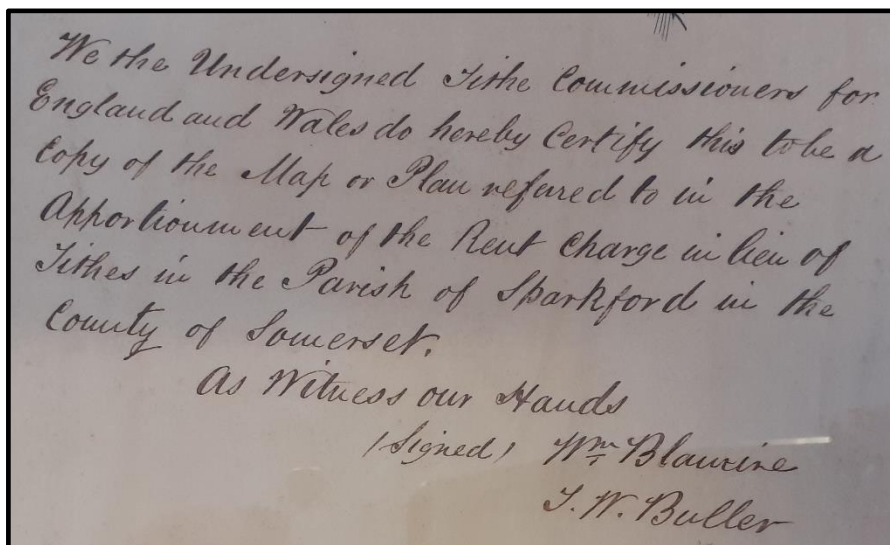
(i) Sparkford Tithe Map (1839)

Source: reproduced by the kind permission of the South West Heritage Trust

Reference: SHC D/D/Rt/M/75



The tithe map with red letters added to mark the application routes



The certification



Section of the map with red letters added to mark the application routes.

(ii) Queen Camel Tithe Map and Apportionment (1842)

Source: reproduced by the kind permission of the South West Heritage Trust

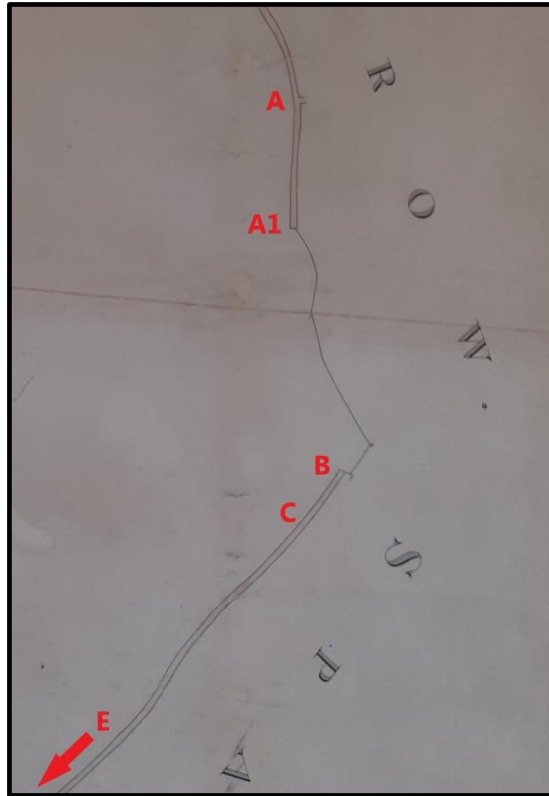
Reference: SHC D/D/Rt/M/377 and SHC D/D/rt/A/377



Map title and certification



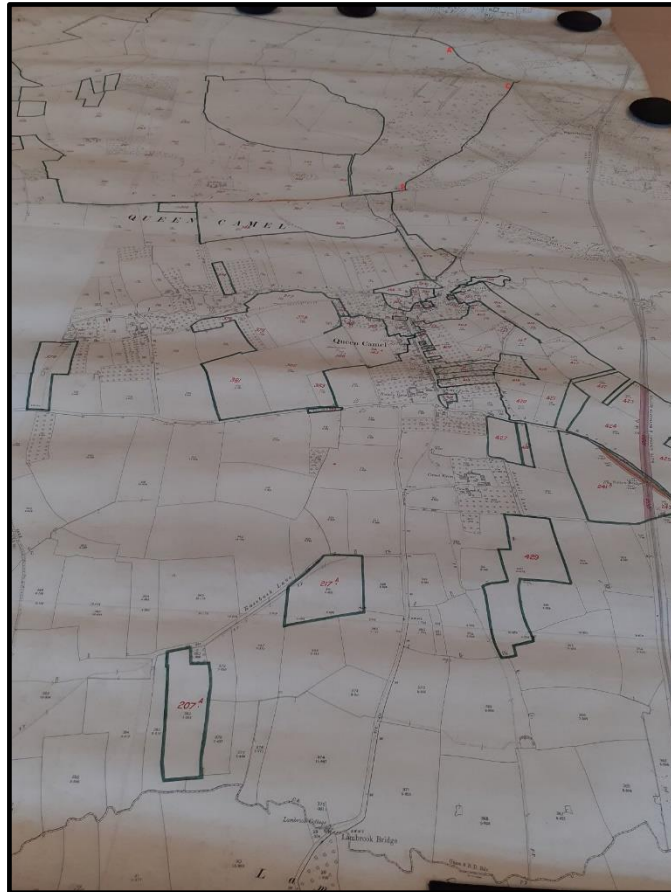
The tithe map with red letters added to mark the application routes



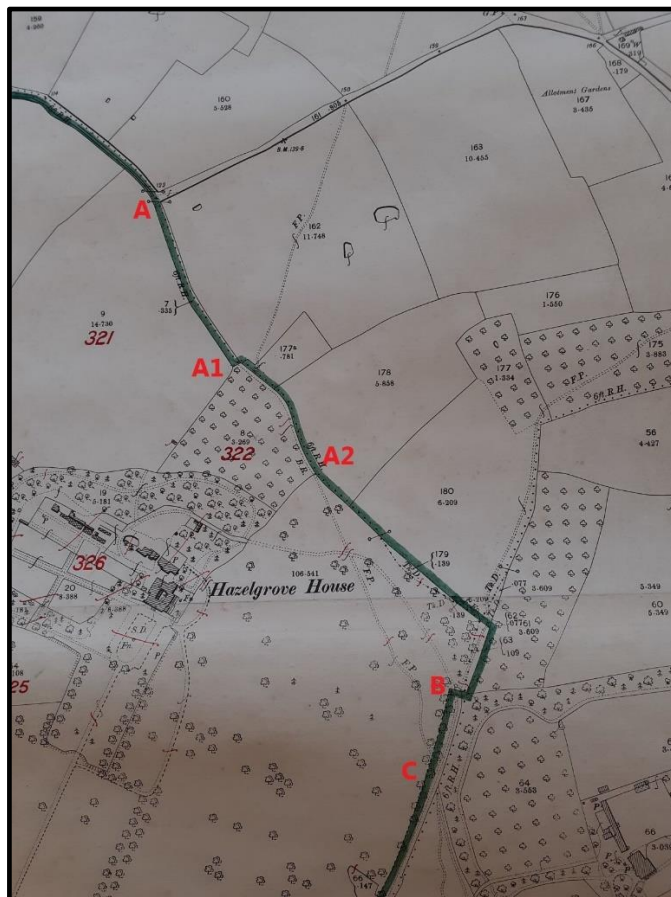
Section of the map with red letters added for reference



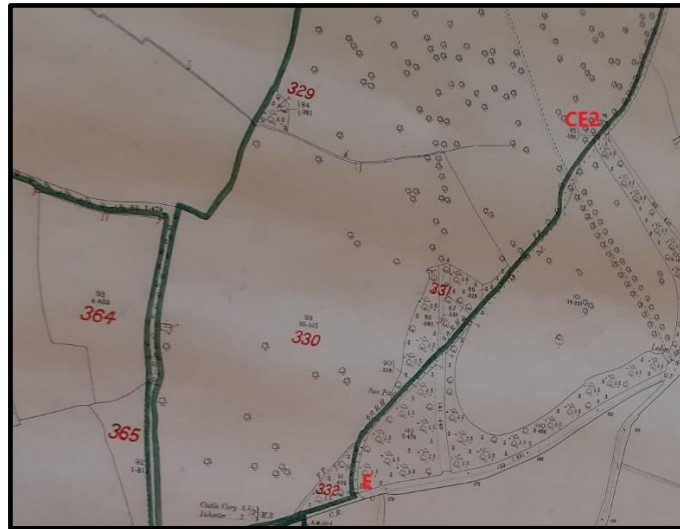
Section of the map with red letters added for reference



Tithe map with red letters added to mark application routes



Section of the map with red letters added to mark the application routes

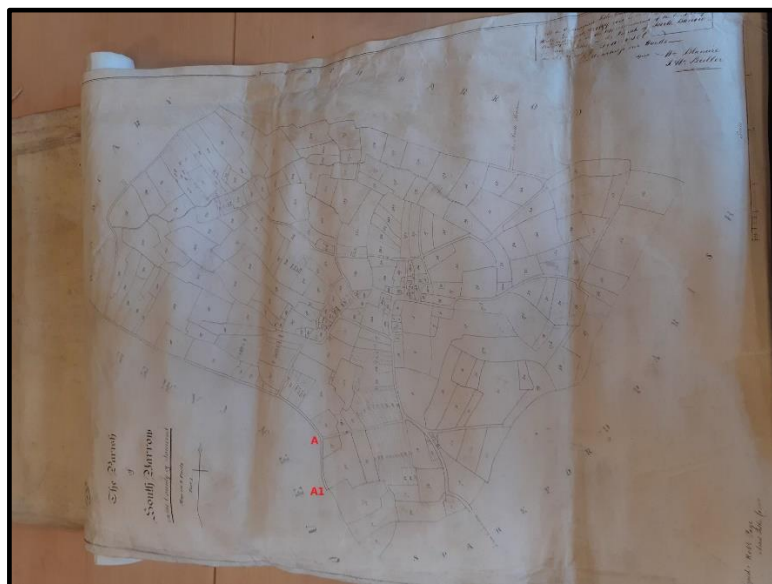


Section of the map with red letters added to mark the application routes

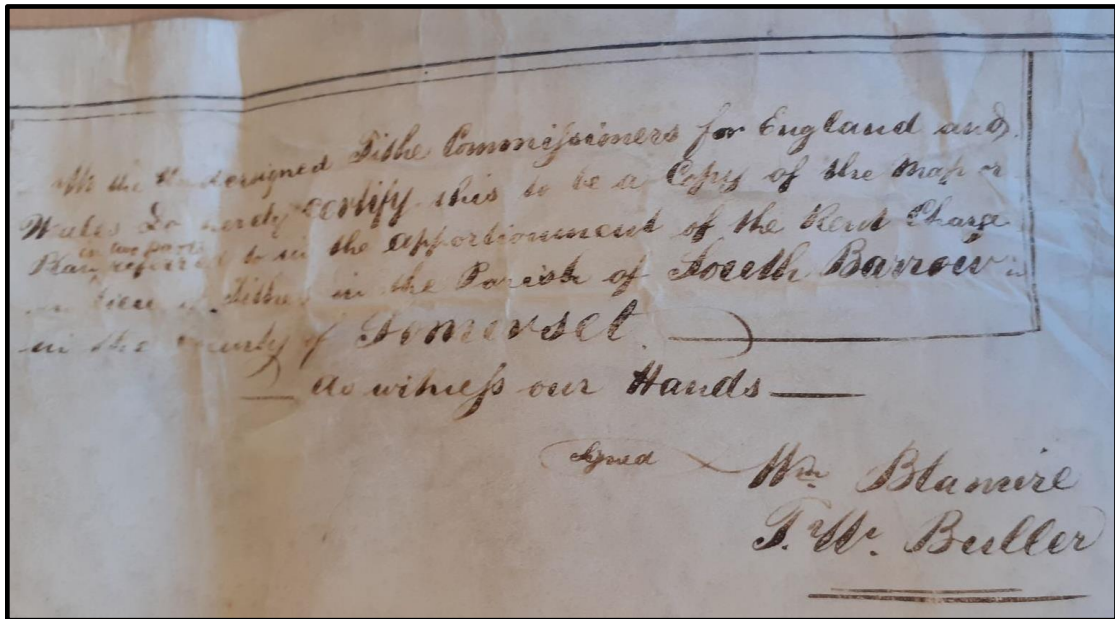
(iv) South Barrow Tithe Map (1843)

Source: reproduced by the kind permission of the South West Heritage Trust

Reference: SHC D/D/Rt/M/422



Tithe map with red letters added to mark application routes



Map certification



Section of the map with red letters added to mark part of application route 858